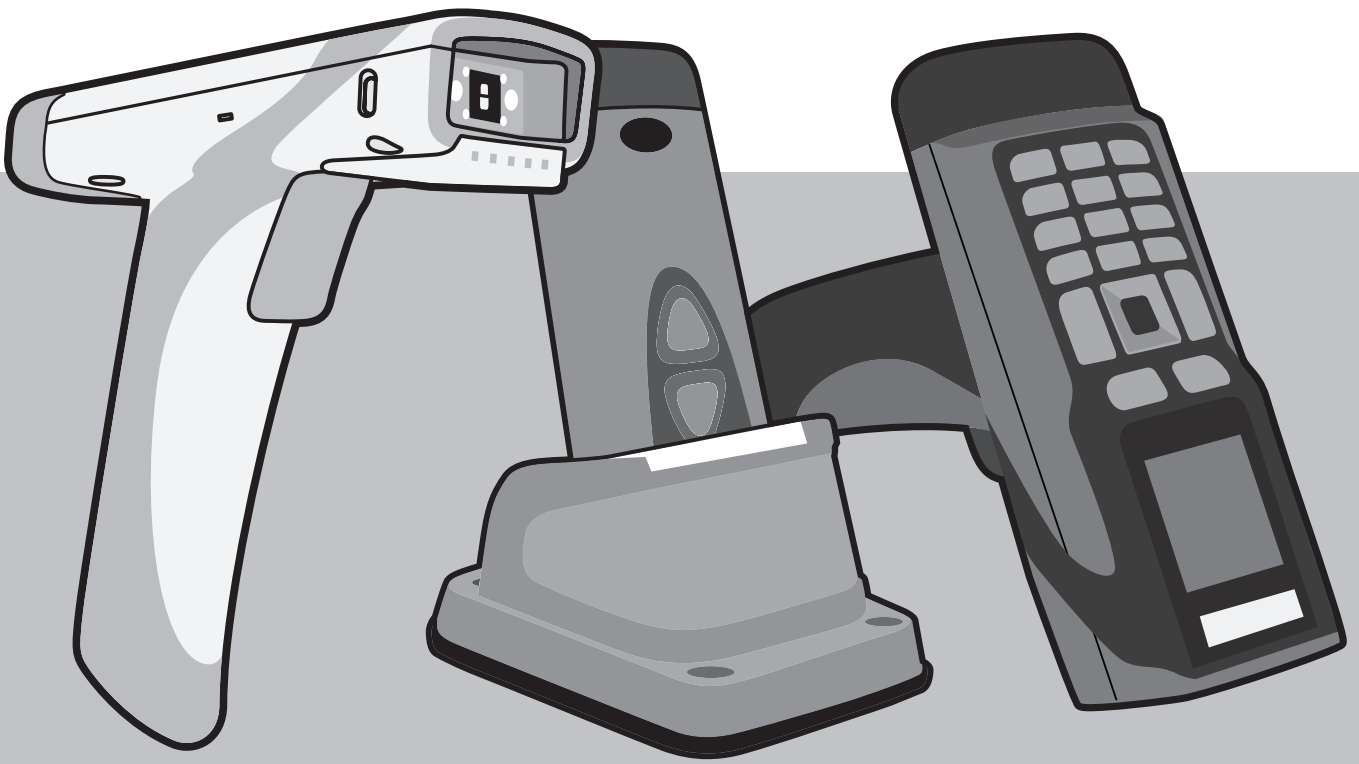


INTEGRATION GUIDE

Bluetooth® Connection Instructions for CR2300/CR2600/CR3600



VERSION 03
RELEASE DATE: MARCH 2016

Table of Contents

1.0 - Initial Pairing Instructions for Bluetooth® Connection to Smart Phones and Tablets 3

2.0 - Keyboard Display options for Apple® iOS..... 3

3.0 - Reconnection to Other Bluetooth® Devices 4

4.0 - Clear Connection History 4

5.0 - Initial Pairing Instructions for Bluetooth® Connection to Windows® 7..... 5

6.0 - Initial Pairing Instructions for Bluetooth® Connection to Windows® 8..... 6

7.0 - Initial Pairing Instructions for Bluetooth® Connection Windows® 10 8

8.0 - Initial Pairing Instructions for Bluetooth® Connection to Internal Bluetooth® of a PC as a Virtual COM Port..... 9

9.0 - Pin References Barcodes 12

1.0 - Initial Pairing Instructions for Bluetooth® Connection to Smartphones and Tablets

The CR2300/CR2600/CR3600 barcode readers are compatible with most Bluetooth keyboard supported smartphone and tablet devices.

1. In your device's list of applications, select the 'Settings' icon.
2. Select the 'Bluetooth' setting.
3. Scan the following barcode to enable your reader to be discoverable by the smartphone or tablet:



M10257_01

Bluetooth Discoverable Mode

Note: Once the reader is in discoverable mode, it will beep 2 times. You will have 30 seconds to initiate connection to the host device. If the 30 seconds elapses without connecting to host device, scan the Discoverable Mode barcode again.

4. The Code CR2600 reader will appear on the list of Bluetooth devices in the smartphone or tablet, select the reader to initiate connection. Some smartphones or tablets will require the user to manually refresh the list of devices before the Code CR2600 will appear for connection.

Note: The Code CR2600 will be the only reader listed for selection once the Discoverable Mode barcode is scanned. Users of the CR2300/CR3600 should also select the Code CR2600 device for connection.

5. A window with a PIN will appear on the device.
6. When the reader beeps 2 times, it is ready for PIN entry. Using the PIN Number Reference Barcodes (located on page 6), scan each of the PIN digits with your reader. You will have 30 seconds to enter the PIN. Scan the 'Submit PIN' barcode when the PIN sequence has been entered.
7. The device will show a positive connection indicator when connection is successful. The reader will beep once when connected and the wireless icon LED will remain solid.

2.0 - Keyboard Display Options for Apple® iOS*

The bottom trigger button on the CR2300/CR2600 can be configured to toggle the smartphone or tablet's on-screen keyboard.

If using the CR3600, the left trigger button can be configured to toggle the keyboard.



To activate this feature, scan the following barcode:



M10259_01

Keyboard Display Option On

To reset the trigger back to the default settings, scan the following barcode:



M10260_01

Keyboard Display Option Off

**This Keyboard Display option is only compatible with Apple iOS.*

3.0 - Reconnect to Other Bluetooth® Devices

1. To re-establish connection to another host device already paired with the reader, scan the following barcode:



M10258_01

Switch Host Device

2. The Code CR2600 will appear in the list of devices in the Bluetooth menu on your device. Select the reader to initiate connection.

Note: If the Code CR2300/CR2600/CR3600 battery has been removed, the reader is out of range, or is powered off while in default connection settings, the reader will initiate connection to the most recent host device when powered back on.

4.0 - Clear Connection History

To clear reader connection from all Bluetooth devices, scan the following barcode:



M10261_01

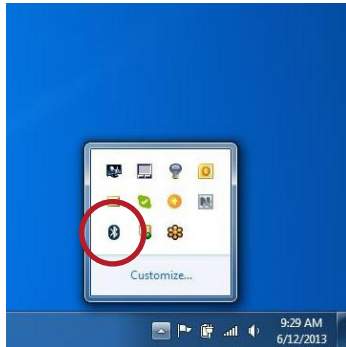
Clear Bluetooth Connection

Note: To re-establish connection once connection history has been cleared, repeat steps 1-8 of Initial Pairing Instructions.

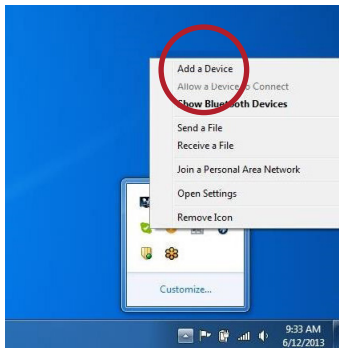
5.0 - Initial Pairing Instructions for Bluetooth® Connection to Windows® 7

A Bluetooth dongle may be needed if it is not built into the host device.

1. Find and select the Bluetooth icon in lower right notification tray.



2. Right-click on the Bluetooth icon. Select 'Add a Device' from the list of options.



3. Scan the following barcode to enable your reader to be discoverable by Windows 7:



Bluetooth Discoverable Mode

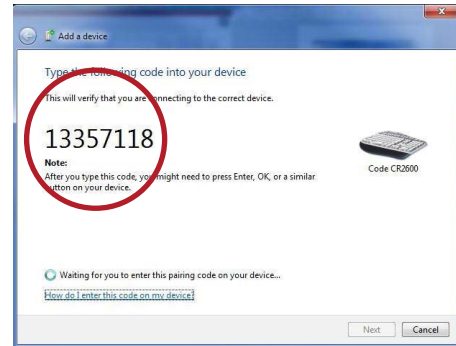
Note: Once the reader is in discoverable mode, it will beep 2 times. You will have 30 seconds to initiate connection to host device. If 30 seconds elapses without connecting to host device, repeat steps 1-3.

4. The Code reader will appear as a device option in the 'Add a Device' window. Select the Code CR2600 device.



Note: The Code CR2600 will be the only reader listed for selection once the Discoverable Mode barcode is scanned. Users of the CR2300/CR3600 should also select the Code CR2600 device for connection.

5. Once the CR2600 device has been selected, a screen will appear containing a PIN.



6. When the reader beeps 2 times, it is ready for PIN entry. Using the PIN Number Reference Barcodes (located on page 6), scan each of the PIN digits with your reader. You will have 30 seconds to enter the PIN. Scan the 'Submit PIN' barcode when the PIN sequence has been entered.

Note: Failure to complete PIN entry within 30 seconds will result in a 'Try Again' notification button. Press the button and repeat steps 3-6.

7. Once the installation of the reader driver is completed, a 'this device has been successfully added to this computer' window will appear.



8. Reader will beep once and the wireless icon LED will remain solid when successfully connected.



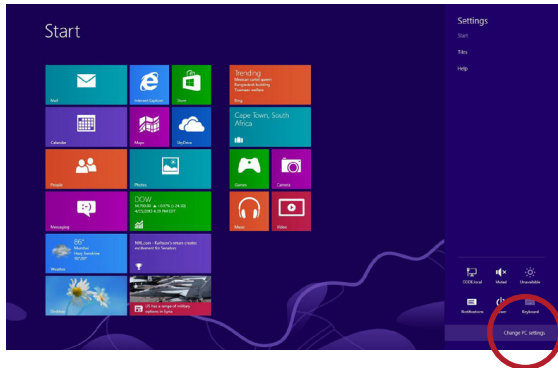
1x

9. To test connection, open 'notepad' and scan barcodes. If data appears on notepad after each scan, you have successfully connected to Windows 7. If notepad is not showing scanned data, remove the BT device from the Bluetooth device screen and repeat steps 1-7.

6.0 - Initial Pairing Instructions for Bluetooth® Connection to Windows 8

A Bluetooth dongle may be needed if it is not built into the host device.

1. From the Start screen, select 'Settings' then select 'Change PC settings.'



Note: To bring up the settings menu, press the Windows and C keys simultaneously on the keyboard. If using a mouse, hover the mouse in the top-right corner. Tablet or PC users with a touch screen, swipe your finger inward from the top right corner.

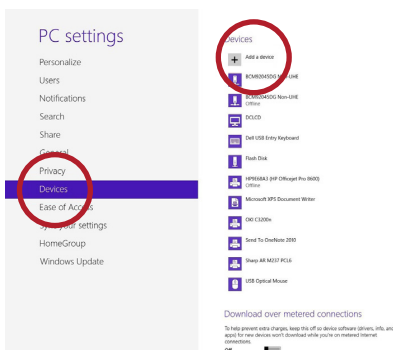
2. Scan the following barcode to enable your reader to be discoverable by Windows 8:



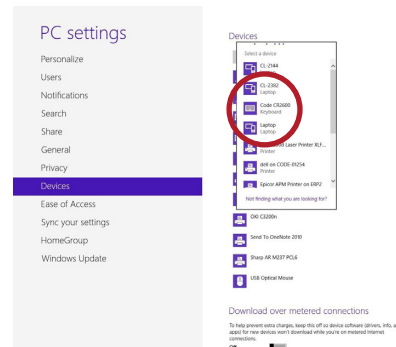
Bluetooth Discoverable Mode

Note: Once the reader is in discoverable mode, it will beep 2 times. You will have 30 seconds to initiate connection to host device. If 30 seconds elapses without connecting to host device, scan the discoverable mode barcode again.

3. Select 'Devices' and then select 'Add a Device.'

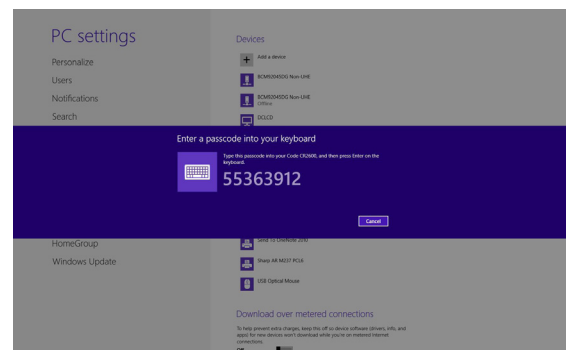


4. Your Code reader will appear as a device option on the 'Devices' window. Select the Code CR2600 device.



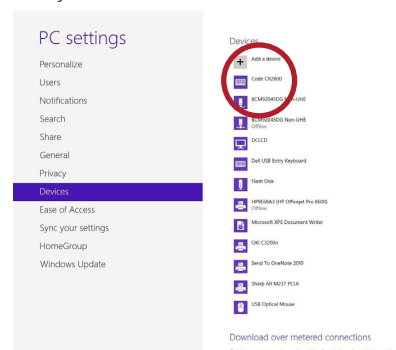
Note: The Code CR2600 will be the only reader listed for selection once the Discoverable Mode barcode is scanned. Users of the CR2300/CR3600 should also select the CR2600 device for connection.

5. Once the Code CR2600 device has been selected, a screen will appear containing a PIN (Passcode). Windows 8 will occasionally provide an entry box for users to create their own passcode; enter the numeric passcode of your choice.



6. When the reader beeps 2 times, it is ready for passcode entry. Using the PIN Reference Barcodes (located on page 6), scan each of the passcode digits with your reader. You will have 30 seconds to enter the passcode. Scan 'Submit PIN' when the passcode sequence has been entered.

7. The Code CR2600 will appear as a device if the passcode has been entered correctly.



8. Reader will beep once and the wireless icon LED will remain solid when successfully connected.

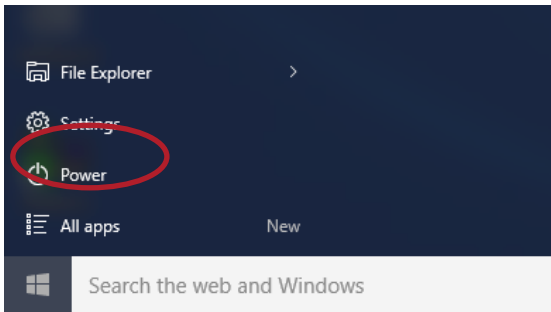


1x

9. To test connection, open 'notepad' and scan barcodes. If data appears on notepad after each scan, you have successfully connected to Windows 8. If notepad is not showing scanned data, remove the BT device from the Bluetooth device screen and repeat steps 1-9.

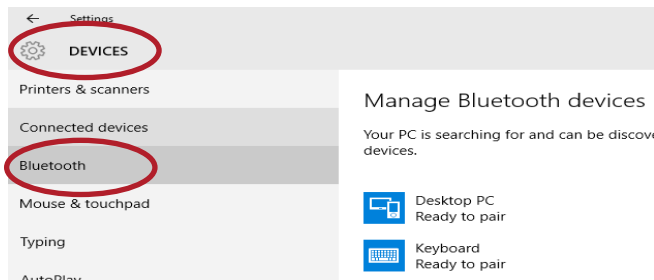
7.0 - Initial Pairing Instructions for Bluetooth® Connection to Windows 10

1. From the Start screen, select 'Settings'.

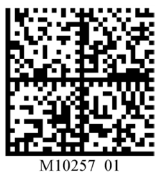


Note: To bring up the settings menu, press the Windows and C keys simultaneously on the keyboard. If using a mouse, hover the mouse in the top-right corner. Tablet or PC users with a touch screen, swipe your finger inward from the top right corner.

2. In the Settings dialog, choose 'Devices', then 'Bluetooth'.



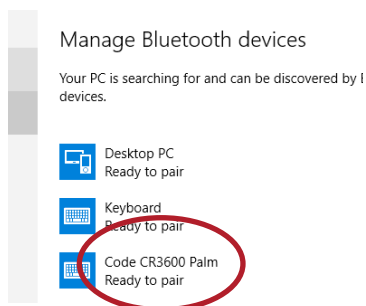
3. Scan the following barcode to enable your reader to be discoverable by Windows 10:



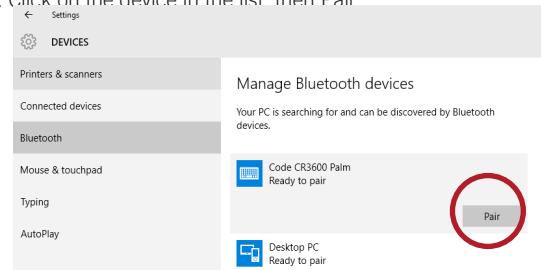
Bluetooth Discoverable Mode

Note: Once the reader is in discoverable mode, it will beep 2 times. You will have 30 seconds to initiate connection to host device. If 30 seconds elapses without connecting to host device, scan the discoverable mode barcode again.

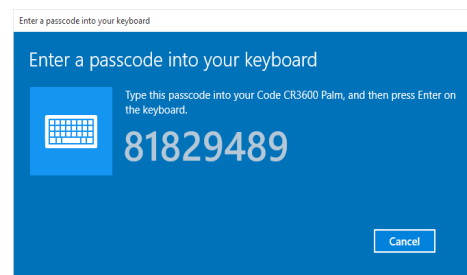
4. When the Code device is ready to pair, it will appear in the Manage Bluetooth devices list. (In this example we are using a Code CR3600 Palm device.)



5. Click on the device in the list, then Pair.

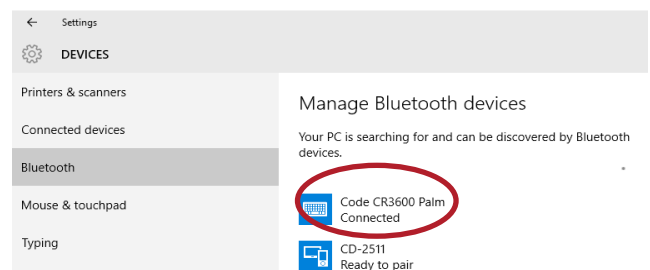


6. Once the Code CR3600 device has been selected, a screen will appear containing a PIN (Passcode). Windows 10 will occasionally provide an entry box for users to create their own passcode; enter the numeric passcode of your choice.



7. When the reader beeps 2 times, it is ready for passcode entry. Using the PIN Reference Barcodes (located on page 6), scan each of the passcode digits with your reader. You will have 30 seconds to enter the passcode. Scan 'Submit PIN' when the passcode sequence has been entered.

8. The device will appear in the Manage Bluetooth devices as a Connected device.



9. Reader will beep once and the wireless icon LED will remain solid when successfully connected.

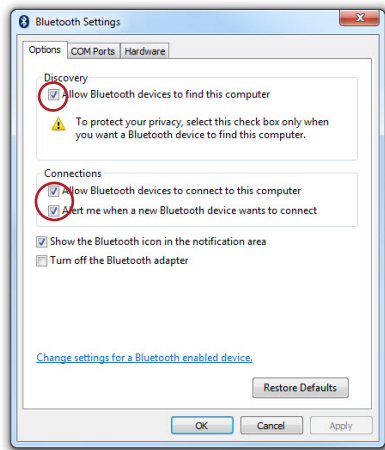


10. To test connection, open 'notepad' and scan barcodes. If data appears on notepad after each scan, you have successfully connected to Windows 10. If notepad is not showing scanned data, remove the BT device from the Bluetooth device screen and repeat steps 1-10.

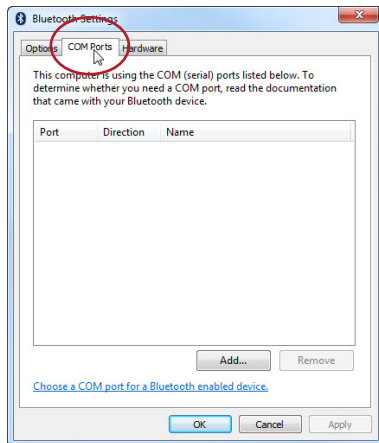
8.0 - Initial Pairing Instructions for Bluetooth Connection to Internal Bluetooth of a PC as a Virtual COM Port

A Bluetooth dongle may be needed if it is not built into the host device.

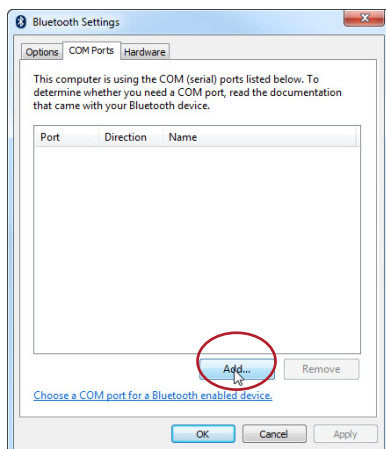
1. Find and select the Bluetooth icon in lower right notification tray.
2. Right-click on the Bluetooth icon. Select 'Open Settings'
3. On the Options tab, check the first three options.



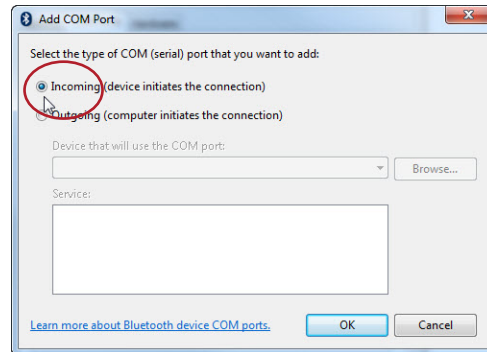
4. Open the COM Ports tab.



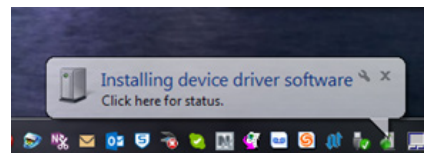
5. Select Add.



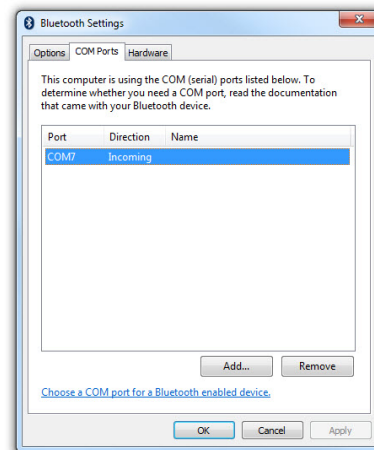
6. Select 'Choose Incoming COM Port', followed by 'OK'.



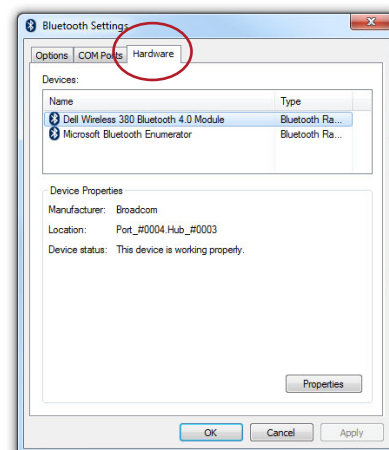
7. Windows will install the COM Port.



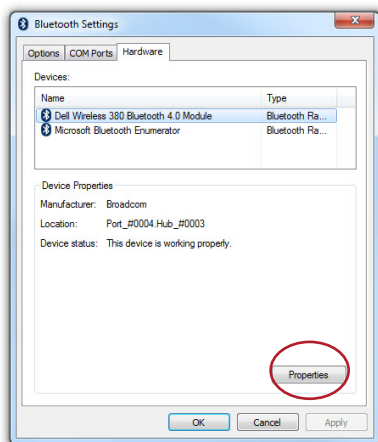
8. When installation is complete, the COM Port will appear on the COM Port tab. The Port # should be noted for a future step.



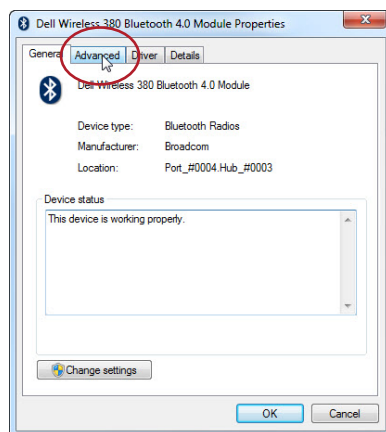
9. Open the Hardware tab, to view installed Bluetooth devices.



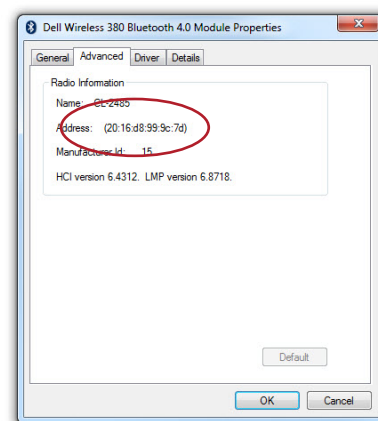
10. Open the Properties of the installed Bluetooth Adapter.



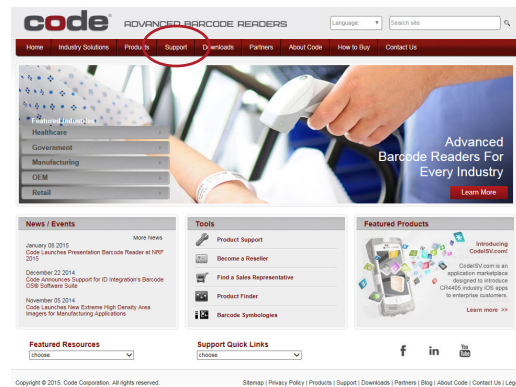
11. Select the Advanced tab.



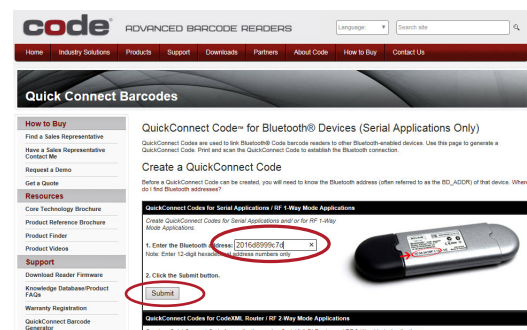
12. Make a note of the Address for a future step.



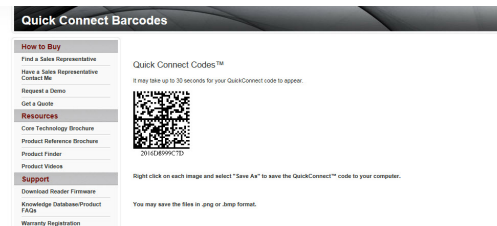
13. Go to www.codecorp.com, and select the Support tab.



13. Select the QuickConnect Code™ icon.

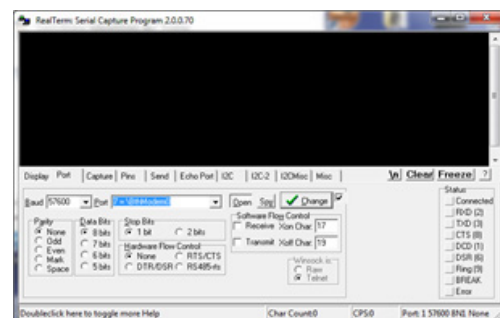


14. Enter the Bluetooth Address (from step 12), and select Submit to generate a QuickConnect Code™.



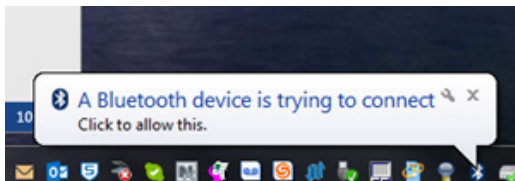
15. Right click on the QuickConnect Code™ to save the configuration barcode. Print the barcode and set aside.

16. Open the COM Port created in Step 8, using a terminal application. (We've used RealTerm)

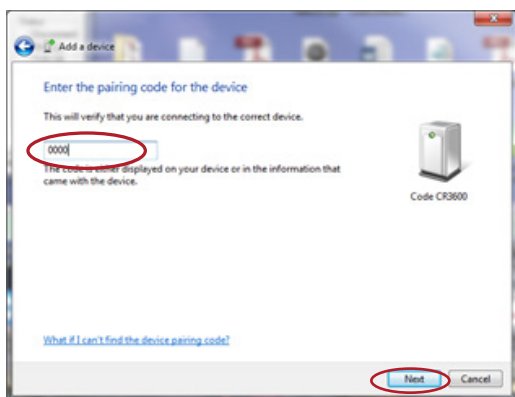


17. Power on the Code barcode reader and scan the QuickConnect Code™ created in step 15 to initiate a Bluetooth connection between the reader and the PC.

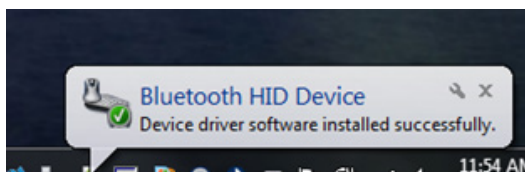
18. The Bluetooth Attempt Notification bubble will pop up in the bottom right corner; click to allow connection



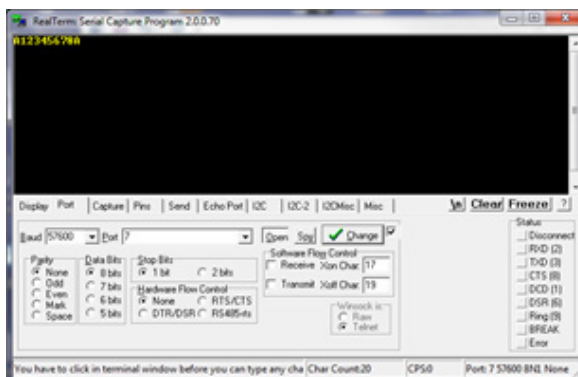
19. Enter '0000' as the Pairing Code and select Next.














20. A notification will be displayed upon completion of the installation.



21. Scanned barcoded data will now be displayed in the Terminal window.



9.0 - PIN Reference Barcodes

 M10262_01	 M10263_01	 M10264_01
1	2	3
 M10265_01	 M10266_01	 M10267_01
4	5	6
 M10268_01	 M10269_01	 M10270_01
7	8	9
 M10271_01	 M10272_01	
0	Submit PIN	